

# Excel Link 2

## Use MATLAB® with Microsoft Excel

Excel Link connects Microsoft Excel with the MATLAB® workspace, enabling you to access the MATLAB environment from an Excel spreadsheet. With Excel Link, you can exchange data between MATLAB and Excel, taking advantage of Excel's familiar interface while accessing the computational speed and visualization capabilities of MATLAB.

Excel Link is especially useful as an array editor for viewing and editing data interactively in any MATLAB application. Any data that you can import into Excel can be passed to MATLAB for analysis and visualization. The connection between MATLAB and Excel is "live" and requires no intermediate files or low-level, inter-process programming.

### Working with Excel Link

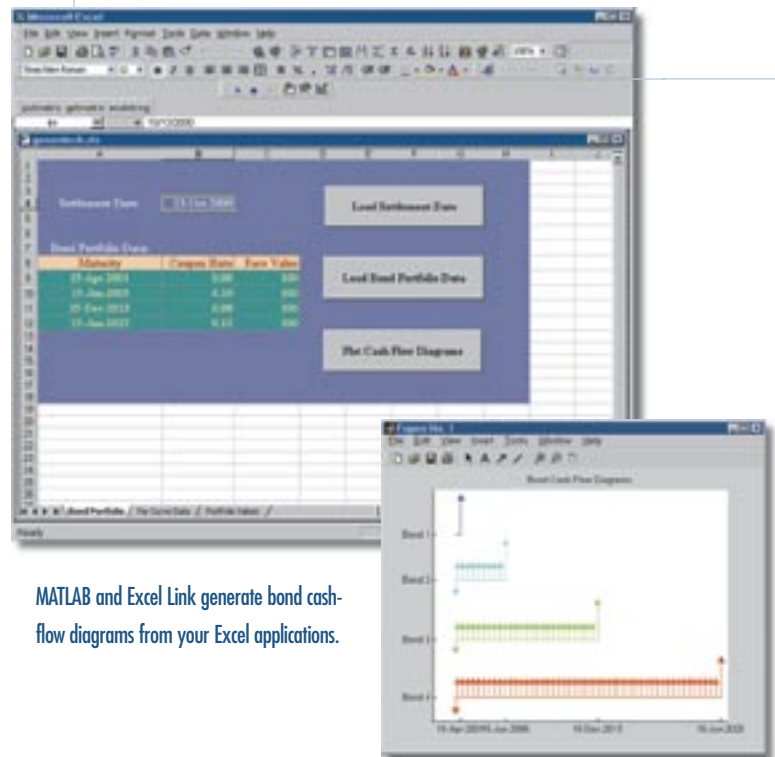
Excel Link features an Excel spreadsheet add-in that provides the functions that connect Excel and MATLAB. The add-in handles interprocess communications between Excel and MATLAB through ActiveX.

Excel provides a familiar interface that lets you easily edit and view your data. Excel Link lets you pass data, and commands that operate on it, to MATLAB. Excel Link functions let you:

- Manage the link between the two software environments
- Start MATLAB automatically when you start Excel
- Transfer data between MATLAB and Excel in both directions
- Execute any MATLAB function directly from Excel

### KEY FEATURES

- Data preprocessing, editing, and viewing in the familiar Excel environment
- Sophisticated analysis of Excel data using MATLAB and application toolboxes
- Delivery of Excel-based applications, using MATLAB as a computational and graphics engine and Excel as an interface



MATLAB and Excel Link generate bond cash-flow diagrams from your Excel applications.

## Sample Functions

Append data to a matrix in the MATLAB workspace, create a new matrix

Delete a matrix from the MATLAB workspace

Pass a command string to MATLAB for evaluation and execution

Retrieve a matrix from the MATLAB workspace and copy it to an Excel spreadsheet

Retrieve a matrix from the MATLAB workspace and copy it to a VBA variable

Create or overwrite a matrix in the MATLAB workspace with data from a spreadsheet

Create or overwrite a matrix in the MATLAB workspace with data from a VBA variable

## Managing the Link and Manipulating Your Data

With Excel Link, Microsoft Excel becomes an easy-to-use data-storage and application-development front end for MATLAB. You work with Excel Link functions from an Excel worksheet or macro without leaving the Excel environment. You can use the Excel interface to edit and view your data and then use Excel Link to pass data and commands to MATLAB. You can pass data stored in an Excel spreadsheet to the MATLAB workspace. Similarly, you can easily bring data from the MATLAB workspace into an Excel spreadsheet.

The MATLAB workspace includes all the variables created by MATLAB, Handle Graphics®, and MATLAB toolboxes. MATLAB functions can access and share the data in these variables, and you can call these same MATLAB functions from Excel formulas, macros, or Excel Visual Basic subroutines or functions.

Because both MATLAB and Excel are extensible, you can develop and incorporate your own data analysis functions and techniques.

## Required Products

MATLAB

## Related Products

**Database Toolbox.** Exchange data with relational databases

**Datafeed Toolbox.** Acquire financial data from data service providers

For more information on related products, visit [www.mathworks.com/products/excellink](http://www.mathworks.com/products/excellink)

## Platform and System Requirements

For platform and system requirements, visit [www.mathworks.com/products/excellink](http://www.mathworks.com/products/excellink) ■

For demos, application examples, tutorials, user stories, and pricing:

- Visit [www.mathworks.com](http://www.mathworks.com)
- Contact The MathWorks directly
  - US & Canada 508-647-7000
  - Benelux +31 (0)182 53 76 44
  - France +33 (0)1 41 14 67 14
  - Germany +49 (0)241 470 750
  - Italy +39 (011) 2274 700
  - Korea +82 (0)2 6006 5114
  - Spain +34 91 799 1880
  - Sweden +46 8 505 317 00
  - Switzerland +41 (0)31 950 60 20
  - UK +44 (0)1223 423 200

Visit [www.mathworks.com](http://www.mathworks.com) to obtain contact information for authorized MathWorks representatives in countries throughout Asia Pacific, Latin America, the Middle East, Africa, and the rest of Europe.