

Datafeed Toolbox 3

Acquire financial data from data service providers

Datafeed Toolbox gives financial engineers access to live market data, time series data, and historical market data for use in complex financial and analytical models in MATLAB®. It provides a direct connection between MATLAB and several financial data servers.

Working with Datafeed Toolbox

Datafeed Toolbox lets you download a wide variety of security data from supported data providers into your MATLAB workspace for visualization and analysis.

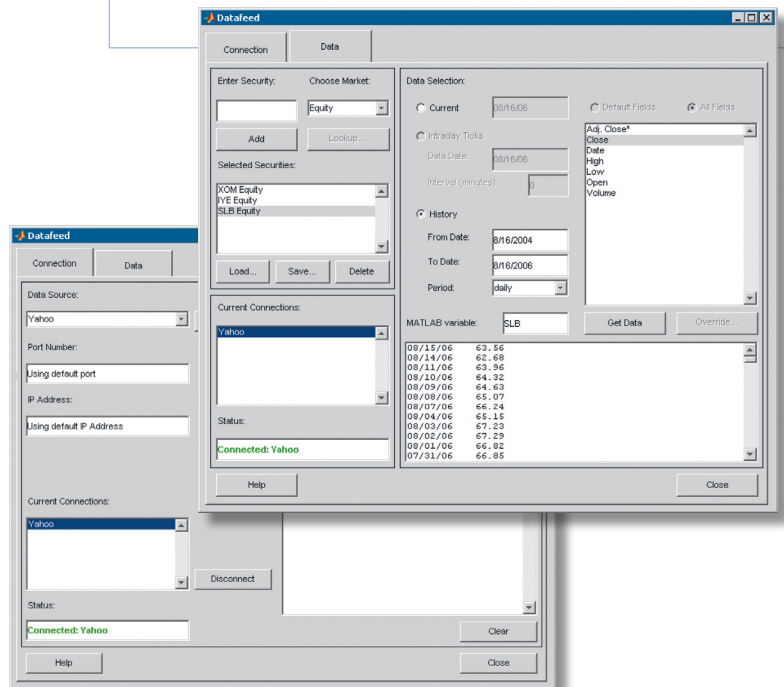
Using the Datafeed Toolbox graphical user interface (GUI) or the MATLAB command line, you can complete the process of communicating with a financial data server in three simple steps:

- Open a connection
- Specify search parameters
- Retrieve the data

From the GUI you can find the ticker symbols for a specific security. You can fetch data fields for securities in a single call and enter securities as ticker symbols or as CUSIP numbers.

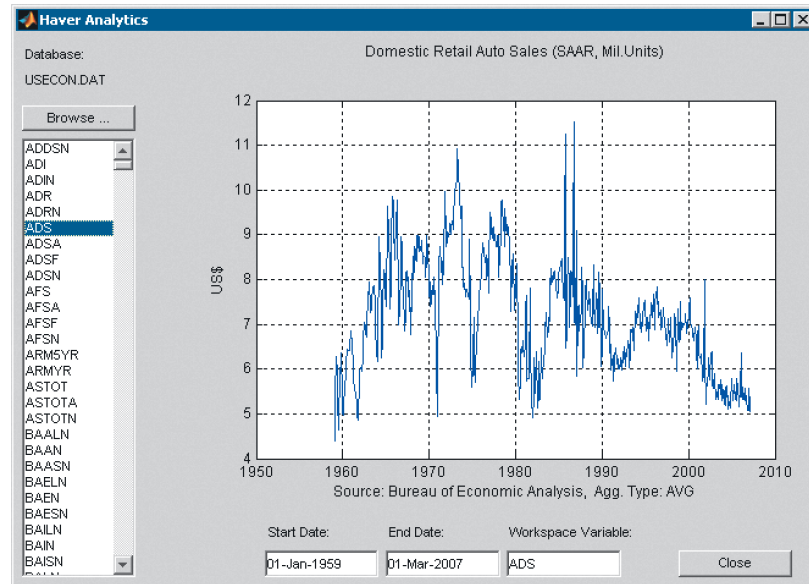
KEY FEATURES

- Integrates the numerical, computational, and graphical capabilities of MATLAB with financial data providers
- Provides access to market, time series, and historical market data in MATLAB
- Lets you monitor the status and history of each connection
- Fetches data fields for multiple securities in a single call
- Lets you look up security ticker symbols from the MATLAB command line or the toolbox GUI



The Datafeed Toolbox Data tab (top) and GUI Connection tab (bottom). You can monitor the status and history of each connection and request current, time series, and historical data from a chosen connection.

View of the Haver Analytics Database using Havertool.



Supported Data Service Providers

Datafeed Toolbox provides a direct connection between MATLAB and the following financial data servers:

- Bloomberg
- Factset
- Federal Reserve Economic Data (FRED)
- Interactive Data
- Haver Analytics
- Kx Systems
- Reuters Market Data System
- Thomson Datastream
- Yahoo! Finance

Required Products

MATLAB

Related Products

Database Toolbox. Exchange data with relational databases

Excel Link. Use MATLAB from Microsoft Excel

For more information on related products, visit www.mathworks.com/products/datafeed

Platform and System Requirements

For platform and system requirements, visit www.mathworks.com/products/datafeed ■

Resources

VISIT
www.mathworks.com

TECHNICAL SUPPORT
www.mathworks.com/support

ONLINE USER COMMUNITY
www.mathworks.com/matlabcentral

DEMOS
www.mathworks.com/demos

TRAINING SERVICES
www.mathworks.com/training

THIRD-PARTY PRODUCTS AND SERVICES
www.mathworks.com/connections

WORLDWIDE CONTACTS
www.mathworks.com/contact

E-MAIL
info@mathworks.com

The Datafeed Securities lookup dialog displaying security ticker symbols in Bloomberg.

