

# DEACTIVATING MATLAB AND SIMULINK SOFTWARE IN THE LICENSE CENTER

**Deactivation renders software unusable** on a computer and frees the license for redesignation to another user or computer. Users can deactivate software that they activated, and administrators and asset managers can deactivate software that they manage.

**Note:** If a user deactivates software on a computer through MATLAB, the activation no longer displays in the License Center. If you are an administrator or asset manager and cannot find a particular activation, check with the user to confirm that he or she deactivated the software.

To get started...

1 Select a **license**.

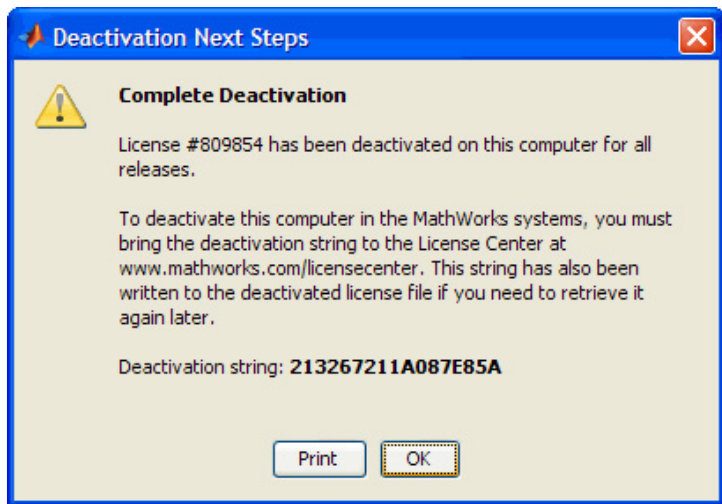
2 Go to the **Activation and Installation** tab.

3 Choose an **activation**.

The screenshot shows the MathWorks License Center interface. At the top, there is a header with the MathWorks logo and 'License Center' text. Below the header, there is a navigation bar with 'Contact Support' and 'Help' links. The main content area is titled 'Licenses' and contains a table with columns: License No., Label, Option, Use, Activation Type, My Role, and Administrator. The table lists several licenses, including 'RD Lab 01', 'RD Lab 02', 'Engineering', and 'Designated Computer'. Below the table, there are tabs for 'License Details', 'Activation and Installation', 'End Users and License Contacts', and 'Passcodes'. The 'Activation and Installation' tab is selected, showing 'Activation Type: Designated Computer', 'License File Expiration: 12/31/2009', and 'Validate from Product: Enabled'. Below this, there is a section for 'Activations on License' with a table showing 'Activation Label', 'Activation Date', 'Activated By', and 'Host ID'. The table lists two activations: 'Work PC' and 'Home Laptop'. Below the table, there is a 'Details for Work PC' section with fields for 'Activation Label', 'Activation Status', 'Activation Date', 'Host ID', 'License File', 'Validation Status', and 'Last Validated'. A 'Deactivate' button is visible next to the 'Work PC' activation details.

4 If validation is enabled, click the Deactivate button to automatically deactivate software.  
If validation is disabled, you need the deactivation string. See instructions on the next page.

## If validation is disabled ...



1. Go to the computer on which the software is installed to retrieve the deactivation string.
2. Start MATLAB, and go to Help > Licensing > Deactivate Current License
3. Click the Deactivate button, and copy the deactivation string (see example to the left).
4. On a computer with Internet access, go to the License Center.
5. Follow steps 1-4 on the previous page.
6. Enter the string, and click Done.

## If you cannot retrieve the deactivation string...

If the computer on which the software is installed is not available, you can submit a request in the License Center to Customer Service to deactivate the software.

To submit the request:

1. Follow steps 1-4 on the previous page.
2. In the Deactivate dialog, choose the option that indicates you do not have the deactivation string, and click the Continue button.
3. Click the Unable to Retrieve String button.
4. Complete the Deactivation Agreement, and click the I Agree button.

Once you submit the form, the computer is deactivated in MathWorks systems.

If you cannot submit this agreement, go to [www.mathworks.com/support/contact\\_us](http://www.mathworks.com/support/contact_us) for contact information.