

ACTIVATING POLYSPACE SOFTWARE WITHOUT AN INTERNET CONNECTION

For R2010a and later, activating Polyspace software for an Individual license on a computer that is not connected to the Internet is a three-part process.

Part 1: Get the Host ID

Go to www.mathworks.com/hostid and follow the directions for getting the host ID of the computer on which you will install the software. The host ID is the unique identifier of a computer that you need to activate software in the License Center.

Part 2: Go to the License Center

On a computer with Internet access, go to www.mathworks.com/licensecenter to activate the software and retrieve the License File.

2a Select a **license**.

2b Go to the **Activation and Installation** tab.

2c Click the **Activate** button.

The screenshot shows the MathWorks License Center interface. At the top, there is a header with the MathWorks logo and 'License Center'. Below the header, there are navigation links for 'Activation & Installation Troubleshooting', 'Contact Support', and 'Help'. A search bar and buttons for 'Request Report', 'Add License', and 'Search' are also visible. The main content area displays a table of licenses with columns for License No., Label, Option, Use, Activation Type, My Role, and Administrator. The license with ID 4305 and Label 'LabA' is selected. Below the table, there are tabs for 'License Details', 'Activation and Installation', 'End Users and License Contacts', and 'Passcodes'. The 'Activation and Installation' tab is active, showing fields for 'Activation Type' (Designated Computer), 'License File Expiration' (Not Set), and 'Validate from Product' (Enabled). At the bottom of this tab, there are 'Activations' instructions and an 'Activate' button. The instructions state: 'R2008a and later must be activated to retrieve a License File. R2007b and earlier releases require passcodes. Note: The easiest way to install and activate MathWorks products is to log in to your MathWorks Account during installation on the client computer.'

License No.	Label	Option	Use	Activation Type	My Role	Administrator
1878	Engineering	Individual	Commercial	Not Set	Administrator	Susan Jones
2308		Group	Commercial		Administrator	Susan Jones
2304	Lab4	Individual	Commercial	Not Set	Administrator	Susan Jones
3085	Project 6	Concurrent	Commercial	Network Concurrent User	Administrator	Susan Jones
4305	LabA	Individual	Commercial	Designated Computer	Administrator	Susan Jones
5947	LabB	Individual	Commercial	Stand-Alone Named User	Administrator	Susan Jones
7337	LabC	Individual	Commercial	Not Set	Administrator	Susan Jones
7789	LabD	Individual	Commercial	Designated Computer	Administrator	Susan Jones

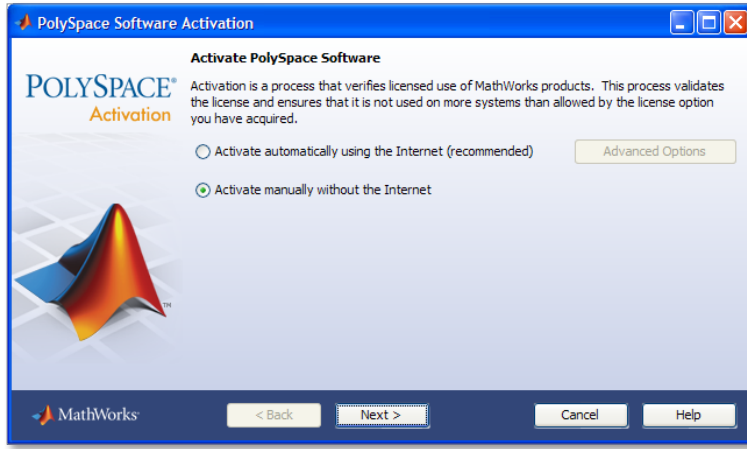
2d After you click the Activate button, complete the series of dialog boxes for your license option and activation type.

2e Download the License File and File Installation Key, or e-mail the files to yourself for transfer to the off-network computer.

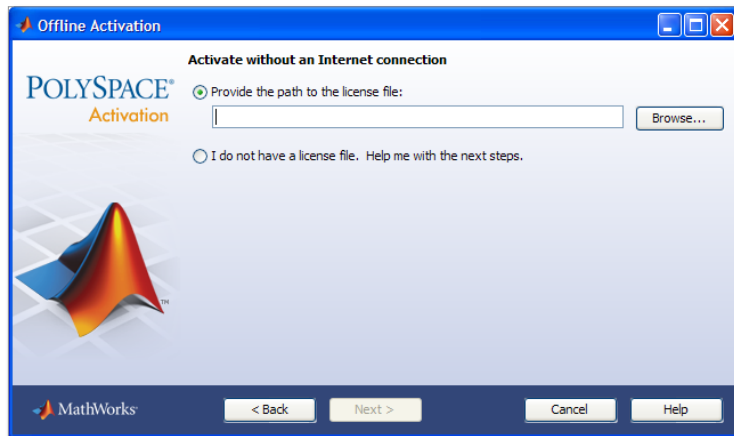
Part 3: Complete the Activation Process

Copy the License File you retrieved in the License Center to the off-network computer, and save it as `license.lic`.

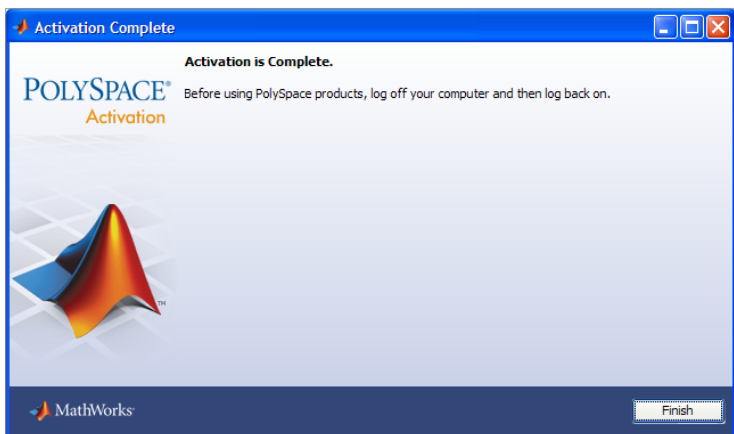
If you have not yet installed the products, start the installation process. If you have installed the products, launch the activation process from the Activation folder of your installation.



After installation, the activation process starts automatically. Choose the option to activate manually without the Internet.



Provide the path to your license file when prompted, and click Next.



The activation process is complete. Once you log off and log back on to your computer, you can start using your Polyspace products.