

## How to Install R2017b Updates

The following instructions apply to all R2017b Updates (Update 1, Update 2, Update 3, etc).

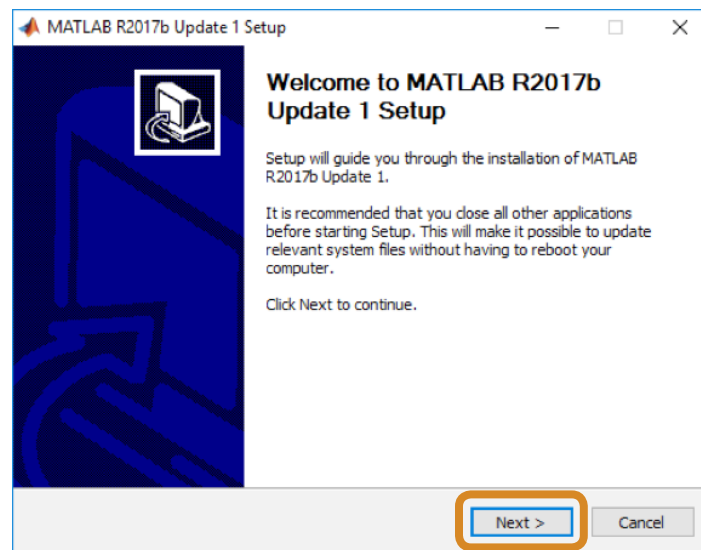
See the [R2017b Updates Release Notes](#) for information about limitations and bugs fixed in the Update before installing.

Each update includes new bug fixes as well as all fixes in previous updates. You can apply the R2017b Update to an installation of any previous R2017b update or the original R2017b release. For example, applying Update 3 to the original R2017b release, Update 1, or Update 2 advances the installation to R2017b Update 3.

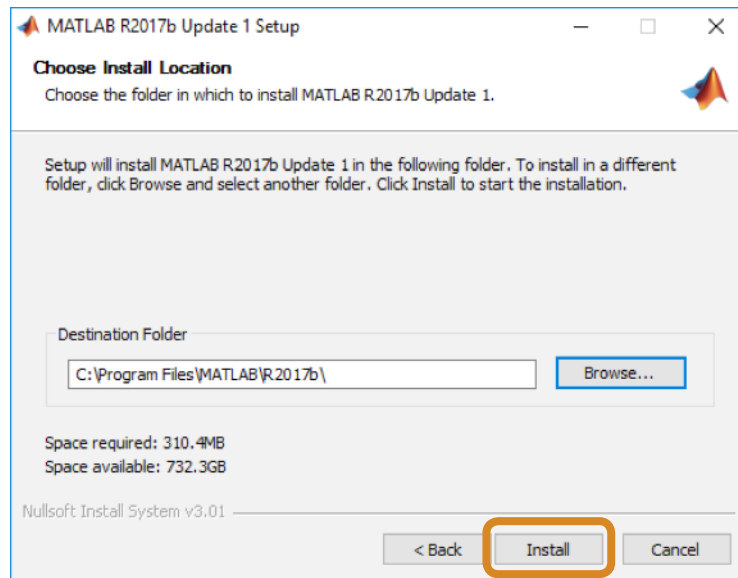
### Install the Software

#### Windows - Interactive Installation

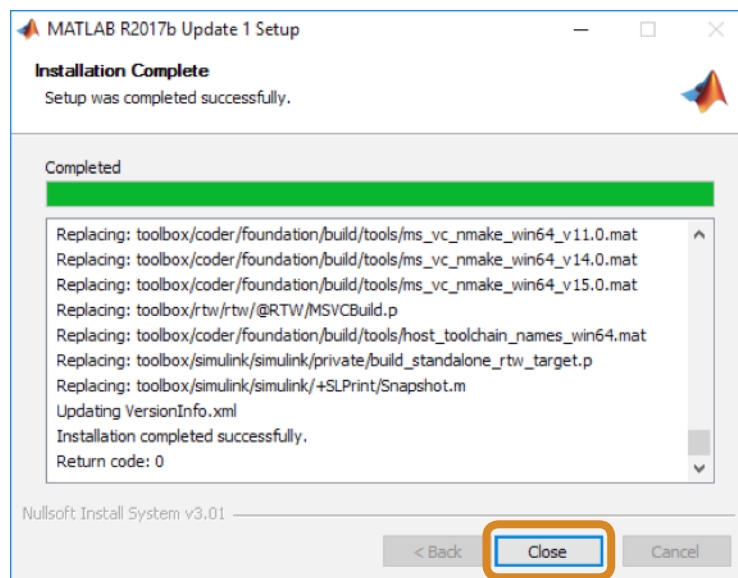
1. Start the installer. Click **Next** to continue.



2. Accept the default installation folder, or click **Browse** to select a different one. Click **Install**.



3. After the installation is complete, click **Close**.



## Windows – Silent Installation

To run the silent installer in Windows, first make sure that you quit any release of MATLAB open on your machine. Run the installer from a system prompt with the /S flag (silent), providing the R2017b root directory. For example:

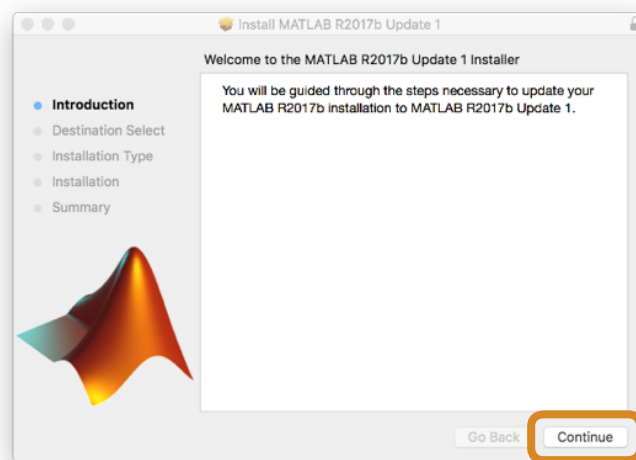
```
start /wait R2017b_Update_# /S /D=C:\Program Files\MATLAB\R2017b
```

(replace # with the Update number you are installing)

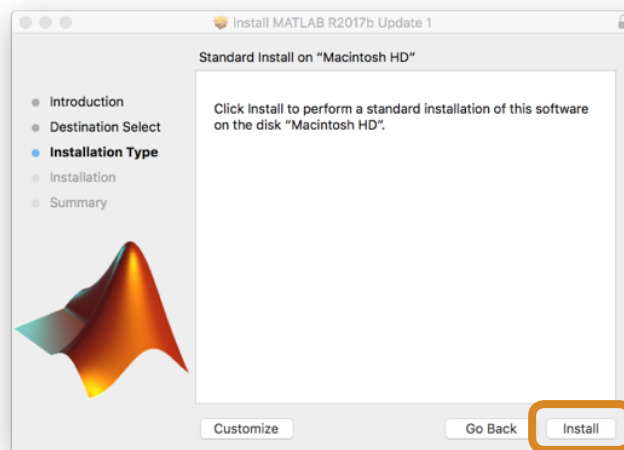
If the Update is already installed, the operation will still run, but no changes will be made.

## macOS – Interactive Installation

1. Double-click on the downloaded PKG to launch the installer.
2. Click **Continue**.

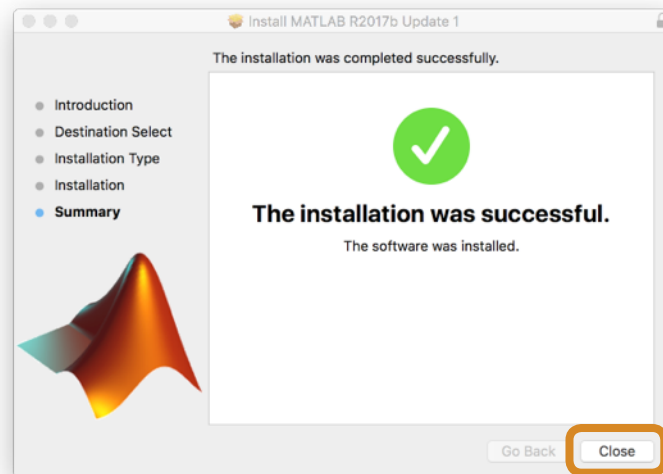


3. Click **Install**.



(If your installation of R2017b is not under /Applications, click **Customize** first to choose a different location.)

4. Enter the username and password of a user with administrative privileges, if prompted. After the installation is complete, click **Close**.



### macOS – Silent Installation

To run the silent installer on macOS, first make sure that you quit any release of MATLAB open on your machine. Invoke the PKG from a terminal shell using proper privileges. For example, for the default installation location of /Applications:

```
sudo installer -dumplog -pkg  
/Users/<username>/Downloads/MATLAB _ R2017b _ Update _ #.pkg -target /
```

(replace # with the Update number you are installing)

If the Update is already installed, the operation will still run, but no changes will be made.

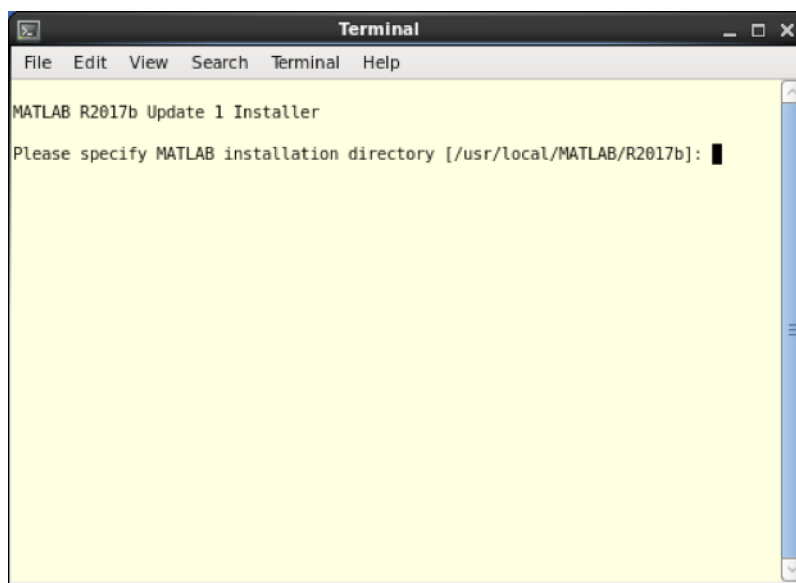
## Linux - Installation

1. In a terminal window, navigate to the folder where you saved the downloaded installer. Start the installer by entering the command:

```
./R2017b_Update_#_glnxa64.sh
```

(replace # with the Update number you are installing)

2. Type the path to the R2017b installation directory, or just hit Enter to specify the default (shown on the screen).



3. When the installation is complete, the installer will display a message:

```
===== UPDATE INSTALLATION SUCCEEDED =====
```

## Troubleshooting

You can check if the Update was installed successfully by examining the output of the `ver` command:

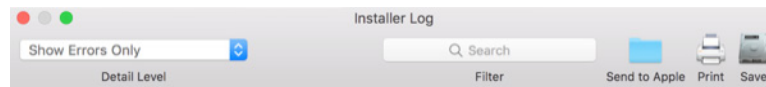
```
>> ver
```

```
-----  
MATLAB Version: 9.3.0.728074 (R2017b) Update 1
```

If the Installer encounters any problems during the install process, it will display an installation failed message. Please obtain the installation log file by following the instructions below, and then contact [MathWorks Technical Support](#).

The log file can be found at: (replace # with the Update number you are installing)

- Windows – `%TEMP%\R2017b _ Update _ #\win64\Update _ #.log`
- macOS – With the installer in the foreground, hit Command-L on your keyboard. An Installer Log window appears. Click on the disk icon to save the log file.



- Linux – `$TMPDIR/MATLAB _ R2017b _ Update _ #/Update _ #.log`

If you are installing Update 1 or Update 2, you might need to enter the following command in MATLAB the first time you start the program after running the Update Installer:

```
>> rehash toolboxcache
```

If you are installing Update 3 or later, you can skip this step.